



CONSEIL



AGROALIMENTARY Insulated Tray



Overviews :

The insulated tray can carry securely thermosensitive products during **24 hours** both summer and winter with adequate load Eutectic (Ice Packs for the products who have to be maintained between 0 & +4°C, dry ice sheets for the products to be maintained between -18 and -15 ° C).

Technical Specifications:

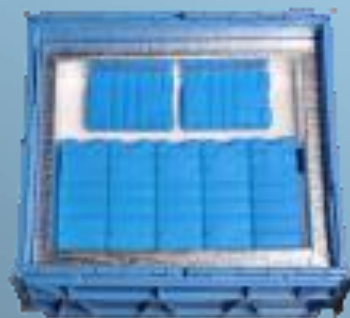
This insulated tray made from a 2 faces metalized lining ISOPRO liner, injected with high density closed cell polyurethane foam with a density of 40/45 kg m³

The ISOPRO is an extruded insulating foam closed cell with a density of 35 kg / m³

The insulated tray is composed of a mono-injected tub avoiding the risks of thermal bridges, and a cover with cap returning for maximum sealing

In vacuum, insulated tray are recessed into each other to reduce their storage space

Insulated Tray in **INTEGRA Tray** / **Tray with closed internal cradle** / **Opened Internal Cradle**



The insulated Tray are :

- **safely stackable.**
- **securable by lead security ties preventing the opening of the lid.**
- **light.**



Features :

Its design provides high results in terms of protection of sensitive products by:

- The use of high density polyurethane foam with closed cell whose conductivity is the lowest of the existing insulation materials on the market.
- Internal and external ISOPRO Metallic Liner, which enhances the conductivity of polyurethane but mainly adds an internal and external reflection by its metallization. This helps to reflect outside the calories and radiation, and inside the cold.
- The cap seal minimizing the risk of thermal bridges on the periphery of the opening.

Its particular shape allows :

- To embed it in plastic tubs of storage.
- To fit them some into the others to limit the volumes of vacuous storage.

Size :

Adapté à un bac plastique format 600x400x350, cloison de 30mm parois et cotés, fond 30mm, couvercle 30mm + 15mm bouchon rentrant pour assurer une parfaite étanchéité.

Adapted to a plastic tub size 600x400x350, partition of 30mm walls and sides, bottom 30mm, lid 30mm + 15mm returning cork to assure a perfect sealing.

- **High outside size:** 537x350x315mm
- **Low outside size:** 518x330x315mm
- **high internal Size:** 477x286x252mm
- **low internal Size:** 455x262x252mm

Useful Volume : 32 liters